

# NATURE BINGO

Print out the sheet and take it with you on a trip, tick every thing you can find in nature.

The first to cross a series of horizontal or vertical shouts BINGO!

For the next bingo, there are two rows that apply, then three rows and finally full bingo, when you have managed to cross out all the squares.

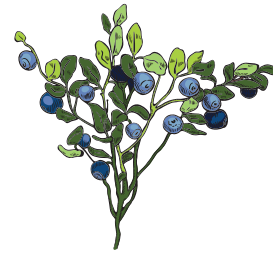


**BECKMANN**

NORWAY 1946



Leaf



Blueberry plant



Conifer cone



Fern



Stone



Tree stump



Cloud



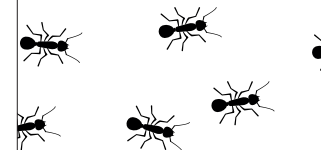
Stick



Bird



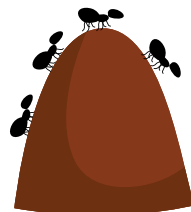
Tree



Ant



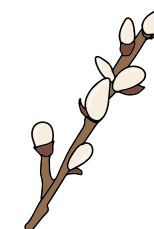
Pond



Ant heap



Grass



Goslings



Heather